

Mike
Dobson



22 Tatefield Place

Kippax, Leeds, LS25 7JZ

Chain Free £180,000

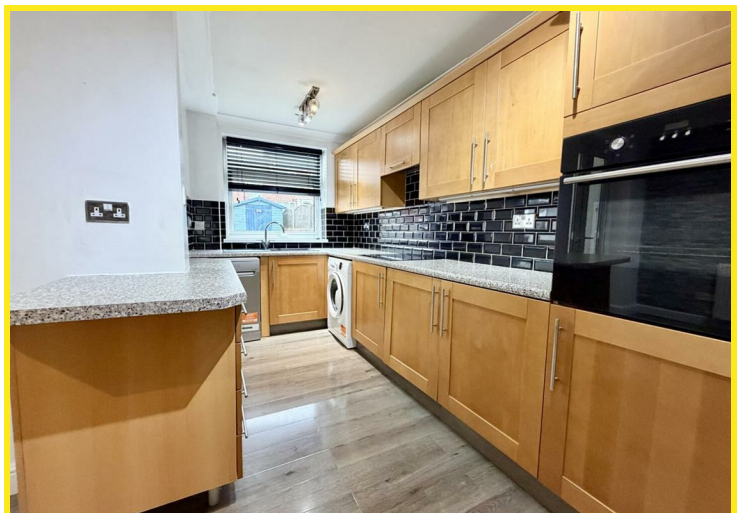
22 Tatefield Place

Nestled in the charming area of Tatefield Place, Kippax, Leeds, this delightful two-bedroom extended terraced house offers a perfect blend of comfort and modern living. The property boasts a well-designed layout, featuring a welcoming lounge with wood burning stove that leads seamlessly into an extended dining kitchen. This spacious kitchen is equipped with a built-in oven, hob, and extractor, as well as an integrated fridge and freezer, making it an ideal space for both cooking and entertaining and has French doors leading to the rear garden

The two bedrooms are generously sized and come complete with fitted wardrobes, providing ample storage for your belongings. The bathroom is conveniently located, ensuring ease of access for all residents. The house benefits from gas central heating and PVCu double glazing, ensuring warmth and energy efficiency throughout the year.

Outside, you will find a small buffer garden at the front, adding to the property's curb appeal. The enclosed rear garden features a lovely patio area and a well-maintained lawn, perfect for enjoying the outdoors or hosting gatherings with family and friends.

This property is situated in a popular location, making it an excellent choice for those seeking a vibrant community atmosphere while still enjoying the tranquillity of home life. With its modern amenities and inviting spaces, this terraced house is a wonderful opportunity for first-time buyers or those looking to downsize. Don't miss the chance to make this charming house your new home.

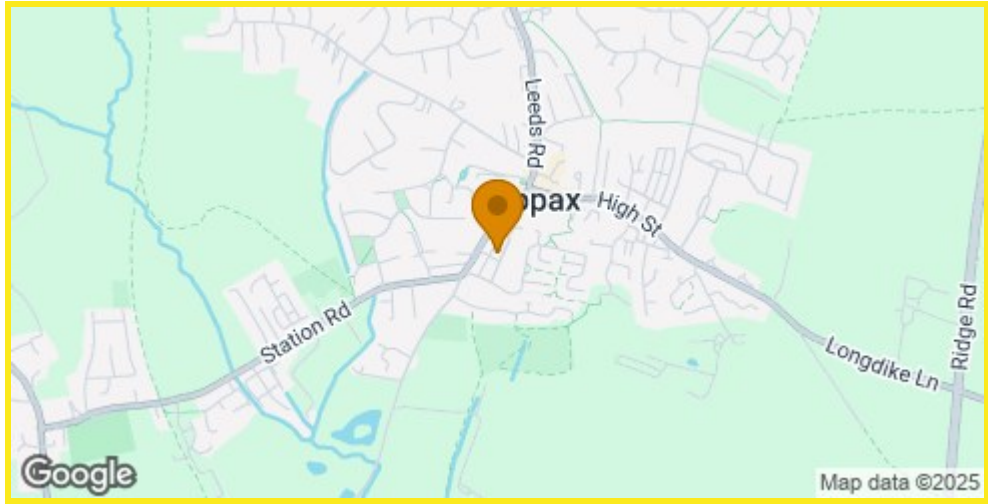




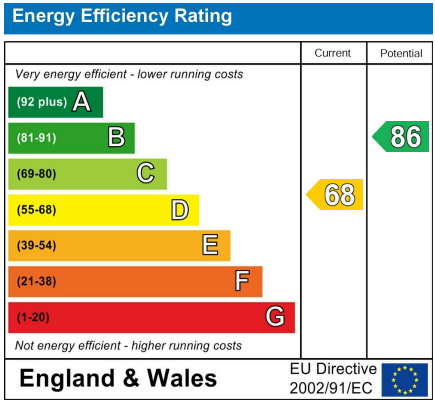
Floor Plan



Area Map



Energy Efficiency Graph



Directions

From our Kippax office turn left to the mini roundabout, bearing left down Butt Hill, take the first turning right and follow the road round onto Tatefield Place where the property can be found on the left hand side as indicated by the agents board.

These particulars, whilst believed to be accurate are set out as a general outline only for guidance and do not constitute any part of an offer or contract. Intending purchasers should not rely on them as statements of representation of fact, but must satisfy themselves by inspection or otherwise as to their accuracy. No person in this firms employment has the authority to make or give any representation or warranty in respect of the property.